

Government of India
Ministry of Earth Sciences
India Meteorological Department



Press Release

Date: 13th December, 2024

Time of Issue: 1300 hours IST

Subject: (i) A low pressure area likely to cause extremely heavy rainfall likely over south Tamil Nadu and heavy to very heavy rainfall over Kerala on 13th December, 2024.
(ii) Cold wave conditions at isolated pockets likely to continue over northwest & central India during next 2-3 days and abate thereafter.

i. Realised weather during past 24 hours till 0830 hours IST of today (Annexure I)

- ❖ **Heavy to very heavy rainfall with exceptionally heavy falls** at isolated places over Tamil Nadu; **heavy to very heavy rainfall** at isolated places over Rayalaseema, Kerala and **heavy rainfall** at isolated places over Coastal Andhra Pradesh.
- ❖ **Cold wave to severe cold wave conditions** observed in isolated pockets over Punjab, Haryana, East Rajasthan and West Madhya Pradesh; **Cold wave conditions** in isolated pockets over East Uttar Pradesh, West Rajasthan, East Madhya Pradesh and Chhattisgarh.
- ❖ **Cold day conditions** observed in isolated pockets of Madhya Pradesh.
- ❖ **Ground frost conditions** recorded in isolated pockets over Uttarakhand and Chhattisgarh.
- ❖ **Dense fog (50-200 m)** reported in isolated pockets of Tripura, Meghalaya and Odisha.
- ❖ **Visibility reported (≤ 200 m)** (in meter): **Odisha:** Rourkela 50; **Tripura:** Agartala 50; **Meghalaya:** Barapani 150.

Weather Systems:

- ❖ The **well marked low pressure area** over Gulf of Mannar & neighbourhood now seen as a low pressure area over Lakshadweep & adjoining Maldives area. It is likely to move westwards and become less marked during next 24 hours.
- ❖ An upper air **cyclonic circulation** is likely to form over south Andaman Sea around 14th December, 2024. It is likely to become a **low pressure area** around 15th December and move west-northwestwards towards Tamil Nadu coasts during subsequent 48 hours.

Forecast & Warnings (upto 7 days) (Annexure II & III):

- ❖ **Tamil Nadu: Heavy to very heavy rainfall with extremely heavy falls** at isolated places very likely on 13th, **heavy to very heavy rainfall** at isolated places on 17th December. Isolated **heavy rainfall** is also very likely on 16th & 18th December.
- ❖ **Kerala: Heavy to very heavy rainfall** at isolated places very likely on 13th December. Isolated **heavy rainfall** is also very likely on 17th & 18th December.
- ❖ **Coastal Andhra Pradesh & Rayalaseema: Heavy rainfall** at isolated places very likely on 16th & 17th December.
- ❖ **Lakshadweep: Heavy rainfall** at isolated places very likely on 13th December.
- ❖ **Andaman & Nicobar Islands: Heavy rainfall** at isolated places very likely during 13th -15th December.
- ❖ Light to moderate rainfall at isolated places accompanied with isolated thunderstorm & lightning very likely over Tamil Nadu, Puducherry on 13th, 14th, 16th & 17th and Coastal Andhra Pradesh & Yanam & Rayalaseema on 16th & 17th December.

Fisherman Warning: Fishermen are advised not to venture into along and off Kerala coasts and Lakshadweep on 13th; Comorin area, Tamil Nadu coast, Gulf of Mannar on 13th & 17th; Andaman Sea on 14th & 15th; Southeast Bay of Bengal on 15th & 16th; Southwest Bay of Bengal and Westcentral Bay of Bengal on 17th December.

ii. Temperature, Cold Wave and Fog Forecast:

Temperature Conditions during past 24 hours till 0830 hours IST of today

Minimum temperatures are **markedly below normal (-5°C or less)** at isolated places over West Bengal & Sikkim; **appreciably below normal (-3°C to -5°C)** at a few places over Madhya Pradesh and Uttar Pradesh; at isolated places over Himachal Pradesh and Assam & Meghalaya; **below normal (-1°C to -3°C)** at a few places over Vidarbha, Gujarat state; at isolated places over Jammu-Kashmir-Ladakh-Gilgit-Baltistan-Muzaffarabad, Punjab, Haryana, Chandigarh, Delhi, Bihar, Rajasthan, Sub-Himalayan West Bengal & Sikkim, Telangana and near normal over rest parts of the country.

Minimum temperatures are in the range of 5-10°C in the plains of Northwest India, in many parts of Central India; and in the range of 10-15°C in many parts of Odisha, Gangetic West Bengal and Western India. Today, **the lowest minimum temperature of -0.4°C** is reported at **Adampur IAF (Punjab)** over the plains of the country.

Forecast of temperature:

- ❖ No significant change in minimum temperatures likely over Northwest & West India during next 2 days and rise by 2-3°C thereafter. (except Gujarat State)
- ❖ No significant change in minimum temperatures likely over Gujarat State, Central & East India during next 5 days.

Cold Wave Warnings:

Cold wave to severe cold wave conditions very likely in some parts of Punjab on 13th & 14th and over isolated pockets on 15th December.

Cold wave conditions very likely in isolated pockets over Jammu-Kashmir-Ladakh-Gilgit-Baltistan-Muzaffarabad during 13th-16th, Haryana & Chandigarh, Uttar Pradesh, Madhya Pradesh and Chhattisgarh during 13th-15th, Rajasthan, Gangetic West Bengal, Bihar and Jharkhand on 13th & 14th December.

Cold Day Warnings:

Cold Day conditions very likely in isolated pockets over Madhya Pradesh on 13th & 14th December.

Dense Fog Warnings:

Dense fog conditions very likely to prevail during late night/early morning hours in isolated pockets of Odisha till 15th, East Uttar Pradesh during 16th-18th, Assam & Meghalaya and Nagaland, Manipur, Mizoram & Tripura till 20th December morning hours.

Ground Frost Warnings:

Ground Frost conditions very likely in isolated pockets over on Uttarakhand and East Uttar Pradesh on 13th; Punjab on 13th & 14th December.

iii. Weather conditions and forecast over Delhi/NCR during 13th to 16th Dec. 2024 (Annexure IV)

For more details, kindly refer National Weather Bulletin:

https://mausam.imd.gov.in/responsive/all_india_forecast_bulletin.php

For District wise warnings refer: <https://mausam.imd.gov.in/responsive/districtWiseWarningGIS.php>

Significant Rainfall recorded during past 24 hours till 0830 hours IST of today 13.12.2024 (in cm):

- ❖ **Tamil Nadu:** Oothu (dist Tirunelveli) 54, Ambasamudram (dist Tirunelveli), Kovilpatti (dist Thoothukudi) 37 each, Kannadaian Anicut (dist Tirunelveli), Kakkachi (dist Tirunelveli) 35 each, Manjolai (dist Tirunelveli) 32, Ayikudi (dist Tenkasi), Nalumukku (dist Tirunelveli), Lalpet (dist Cuddalore) 31 each, Manimutharu (dist Tirunelveli) 30, Palayamkottai (dist Tirunelveli), Manalmedu ARG (dist Mayiladuthurai) 26 each, Srimushnam (dist Cuddalore), Shencottah (dist Tenkasi), Ramanadhi Dam Section (dist Tenkasi), K.M.Koil (dist Cuddalore), Servalar Dam (dist Tirunelveli) 24 each, Thenkasi (dist Tenkasi), Cheranmahadevi (dist Tirunelveli) 23 each, Mayiladuthurai (dist Mayiladuthurai), Papanasam (dist Tirunelveli), Kilacheruvai (dist Cuddalore) 22 each, Avadi (dist Tiruvallur), Pelandurai (dist Cuddalore), Sethiathope (dist Cuddalore), Gundar Dam (dist Tenkasi), Thiruvaidaimaruthur (dist Thanjavur), Tirunelveli AWS (dist Tirunelveli), Jayamkondam (dist Ariyalur) 21 each, Aduthurai AWS (dist Thanjavur), Karaikal (dist Karaikal), Sendurai (dist Ariyalur), Manjalaru (dist Thanjavur) 20 each, Mayiladuthurai AWS (dist Mayiladuthurai), Budalur (dist Thanjavur), Vilathikulam (dist Thoothukudi), Kumbakonam (dist Thanjavur) 19 each, Sembanarkoil PWD (dist Mayiladuthurai), Tirukattupalli (dist Thanjavur), Ariyalur Taluk Office (dist Ariyalur), Karaikal AWS (dist Karaikal), Ariyalur PTO (dist Ariyalur), Karaikal AWS (dist Karaikal), Me Mathur (dist Cuddalore), Ariyalur AWS (dist Ariyalur), Lakkur (dist Cuddalore) 18 each, Tozhudur (dist Cuddalore), Ettayapuram (dist Thoothukudi), Kallakurichi (dist Kallakurichi), Tiruttani (dist Tiruvallur), Kamudhi (dist Ramanathapuram), Bhuvanagiri (dist Cuddalore), Vaippar (dist Thoothukudi), Kalugumalai (dist Thoothukudi), Lower Anaicut (dist Thanjavur), Sriperumbudur (dist Kancheepuram), Eraiyur (dist Perambalur), Kattumayilur (dist Cuddalore), Manalmedu (dist Mayiladuthurai) 17 each, Suthamalli Dam (dist Ariyalur), Vepur (dist Cuddalore), Kadambur (dist Thoothukudi) 16 each, Kalakadu (dist Tirunelveli), Kovilpatti AWS (dist Thoothukudi), Thanjai Papanasam (dist Thanjavur), Sankarankoil (dist Tenkasi), Old Taluk Office Srivaikuntam (dist Thoothukudi), Ayyampettai (dist Thanjavur) 15 each, Karuppanadhi Dam (dist Tenkasi), Ranipet AWS (dist Ranipet), Avudayarkoil (dist Pudukkottai), Koratur (dist Tiruvallur), Poonamallee (dist Tiruvallur), Chembarabakkam_REV (dist Tiruvallur), Arakonam (dist Ranipet), Panapakkam (dist Ranipet), Virudachalam (dist Cuddalore), Vembakottai (dist Virudhunagar), Agaram Seegoor (dist Perambalur), Labbaikudikadu (dist Perambalur), Kundrathur (dist Kancheepuram), Thirumoorthy IB (dist Tiruppur), Sivagiri (dist Tenkasi), Kuppanatham (dist Cuddalore), Adavinainnarkoil Dam (dist Tenkasi) 14 each, Manamelkudi (dist Pudukkottai), Thirumoorthi Dam (dist Tiruppur), Tarangambadi (dist Mayiladuthurai), Kuruvadi (dist Ariyalur), Tirunelveli (dist Tirunelveli), Thiruvalangadu (dist Tiruvallur), Kodaikannal Boat Club (dist Dindigul), Sattur (dist Virudhunagar), Oddanchatram (dist Dindigul), Kaveripakkam (dist Ranipet), Veppanthattai (dist Perambalur), Surangudi (dist Thoothukudi), DSCL Virugavoor (dist Kallakurichi), Tiruvallur (dist Tiruvallur) 13 each, Sivakasi (dist Virudhunagar), Virdhachalam KVK AWS (dist Cuddalore), Maduranthagam (dist Chengalpattu), Palani ARG (dist Dindigul), Kamudhi ARG (dist Ramanathapuram), Thaluthalai (dist Perambalur), Kadalkudi (dist Thoothukudi), Arcot (dist Ranipet), Poonamalle ARG (dist Tiruvallur), Chidambaram (dist Cuddalore), Nannilam (dist Thiruvarur) 12 each, Valinokam (dist Ramanathapuram), Paramakudi (dist Ramanathapuram), Thirumanur (dist Ariyalur), Kayathar (dist Thoothukudi), Andimadam Taluk Office (dist Ariyalur), Krishnapuram (dist Perambalur), Uthiramerur (dist Kancheepuram), Nanguneri (dist Tirunelveli), Amaravathy Dam (dist Tiruppur), Kadaladi (dist Ramanathapuram), Thekkadi (dist Theni), Chetpet (dist Tiruvannamalai), Zone 12 Meenambakkam (dist Chennai), Tirupuvanam (dist Sivagangai), Alandur (dist Chennai), Chennai (AP) (dist Chennai), DSCL Sulangurichi (dist Kallakurichi), Kayalpattinam (dist Thoothukudi) 11 each, DSCL Rishivandhiyam (dist Kallakurichi), Vilupuram (dist Villupuram), Meenambakkam AWS (dist Chennai), Ranipet (dist Ranipet), Periyar (dist Theni), Ulundurpet (dist Kallakurichi), DSCL Eraiyur (dist Kallakurichi), Parangipettai (dist Cuddalore), Dindigul (dist Dindigul), Chengalpattu (dist Chengalpattu), Zone 11 Maduravoyal (dist Chennai), Kancheepuram (dist Kancheepuram), DSCL Thiyagadurgam (dist Kallakurichi), DSCL Kalayanallur (dist Kallakurichi), Tiruttani AWS (dist Tiruvallur), Wallajah (dist Ranipet), Thuvakudi AWS (dist Thiruchirappalli), Sirkali (dist Mayiladuthurai), Tiruttani PTO (dist Tiruvallur), Grand Anaicut (dist Thanjavur), Palani (dist Dindigul), Tirupathur (dist Sivagangai),

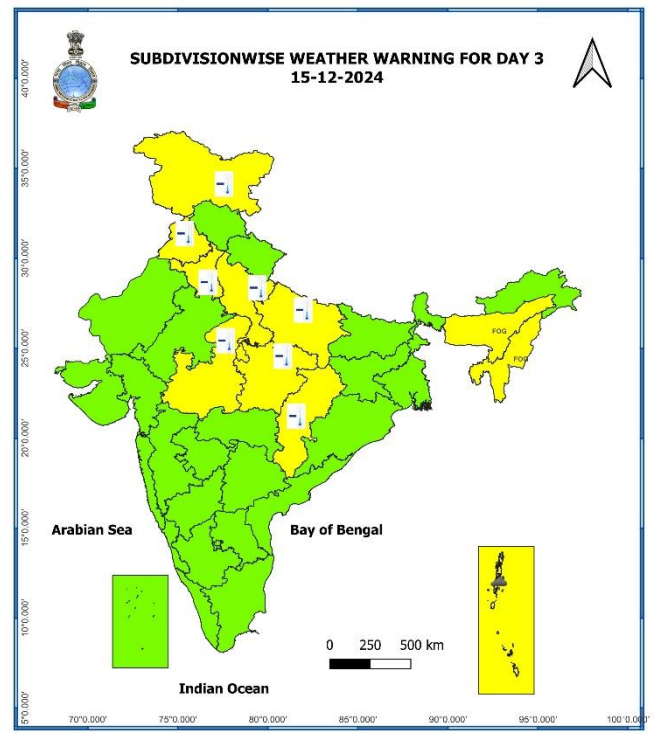
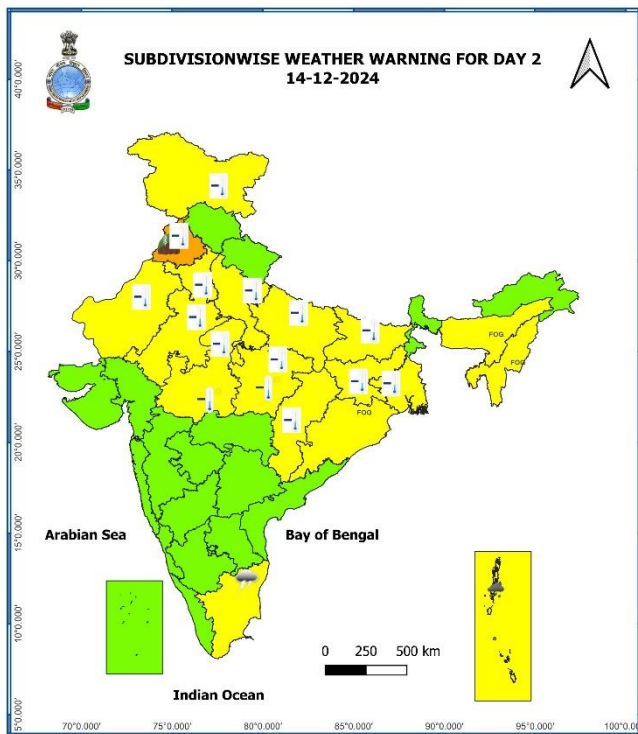
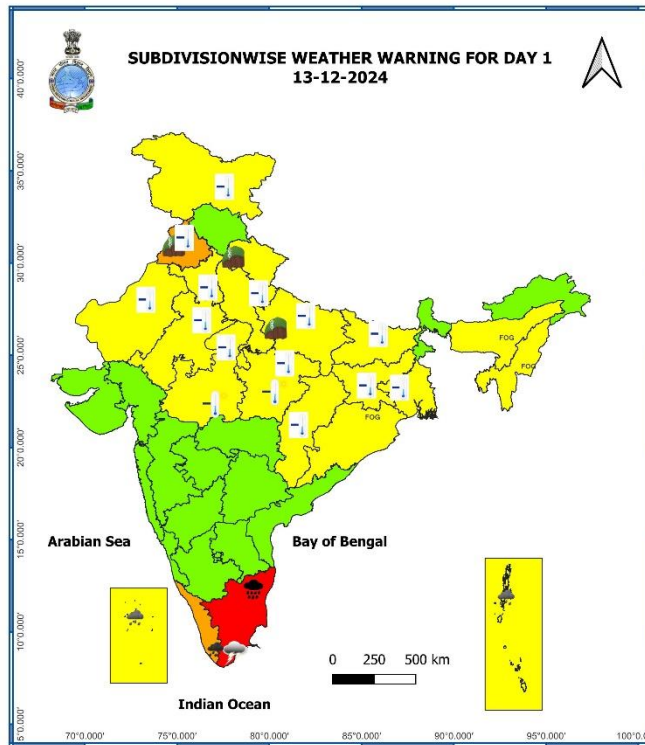
Kodaikanal (distDindigul), Ambathur Rev (dist Chennai), Vedasandur AWS (dist Dindigul) 10 each, Zone 07 Ayapakkam (dist Chennai), V.Kalathur (dist Perambalur), Pullambadi (distThiruchirappalli), Poondi (dist Tiruvallur), Perambalur (dist Perambalur), ChembarambakkamARG (dist Tiruvallur), Tiruvaiyaru (dist Thanjavur), Mudukulatur (dist Ramanathapuram), Pallipattu (dist Tiruvallur), Nagapattinam (dist Nagapattinam), Gingee (dist Villupuram), Gadana Dam (dist Tenkasi), LMOIS Kolapakkam ARG (dist Chengalpattu), Uthukottai (distTiruvallur), Aruppukottai (dist Virudhunagar), DSCL Keelpadi (dist Kallakurichi), Pilavakkal Periyar Dam (dist Virudhunagar), Zone 11 Valasaravakkam (dist Chennai), Ottapadiram (dist Thoothukudi), Panruti (dist Cuddalore), Thanjavur PTO (dist Thanjavur), Madathukulam (dist Tiruppur), ACS Medical College ARG (dist Kancheepuram), SCS Mill Pillaiyarkuppam (dist Kallakurichi), Valangaiman (dist Thiruvarur), Kurungulam (distThanjavur), Gomugi Dam PWD (dist Kallakurichi), Vadakuthu (dist Cuddalore), Thammampatty (dist Salem), Palar Anicut (dist Ranipet), Anna University ARG (distChennai), Nandhiyar Head (dist Thiruchirappalli), Zone 12 Alandhur (dist Chennai), MGRNagar (dist Chennai), Anna University (dist Chennai), RSCL-3 Avalurpettai (dist Villupuram), Azhiyar (dist Coimbatore), Veeraganoor (dist Salem), Singampunari (dist Sivagangai), JayaEngg College AWS (dist Tiruvallur), Zone 6 Perambur (dist Chennai) 9 each, Kollidam (dist Mayiladuthurai), Samayapuram (dist Thiruchirappalli), Moolaikaraipatti (distTirunelveli), DSCL Thirupalapandal (dist Kallakurichi), R.K.Pet (dist Tiruvallur), Tobacco Station (VDR) (dist Dindigul), Vedasandur (dist Dindigul), Tiruchirappalli Airport (distThiruchirappalli), Tiruvarur (dist Thiruvarur), Kovilankulam (dist Virudhunagar), Ayanavaram Taluk Office (dist Chennai), Sholinganallur (dist Chennai), Gummidipoondi (dist Tiruvallur), Satyabama Uty ARG (dist Chengalpattu), Zone 15 Uthandi (dist Chennai), Panjapatti (distKarur), Aruppukottai KVK AWS (dist Virudhunagar), Sethu Bhaskar Agri College AWS (distSivagangai), Tiruvannamalai AWS (dist Tiruvannamalai), Karaikudi (dist Sivagangai), Thanjavur (dist Thanjavur), Chinnakalar (dist Coimbatore), Tuticorin Rly Station ARG (distThoothukudi), Kamatchipuram (dist Dindigul), Ponnaniyar Dam (dist Thiruchirappalli), Perambalur AWS (dist Perambalur), Kalavai PWD (dist Ranipet), Vandavasi (distTiruvannamalai), Maniyachi (dist Thoothukudi), Thiruchuzhi (dist Virudhunagar), Manimutharu Dam PWD (dist Kallakurichi) 8 each, Gangavalli (dist Salem), Chettikulam (dist Perambalur), Tiruvarur AWS (dist Thiruvarur), Keelpennathur (dist Tiruvannamalai), Tiruvannamalai (dist Tiruvannamalai), Tuticorin (distThoothukudi), Sivagangai PWD TB (dist Sivagangai), Ponnai Dam (dist Vellore), Zone 12D156 Mugalivakkam (dist Chennai), Manamadurai (dist Sivagangai), RSCL-3 Valathy (distVillupuram), Kodumudiyaru Dam (dist Tirunelveli), Kodavasal (dist Thiruvarur), Ammoor (Walajah Railway) (dist Ranipet), Needamangalam (dist Thiruvarur), BASL Manalurpet (distKallakurichi), DSCL Madampoondi (dist Kallakurichi), Taramani ARG (dist Chennai), PuthuVettakudi (dist Perambalur), Thogamalai (dist Karur), Aravakurichi (dist Karur), Kadavur Taluk Offie AWS (dist Karur), Pulipatti (dist Madurai), Thirukalukundram (dist Chengalpattu), Kallakurichi ARG (dist Kallakurichi), Tiruvadani (dist Ramanathapuram), Srivilliputhur (distVirudhunagar), Tindivanam (dist Villupuram), Mahabalipuram (dist Chengalpattu), Ammundi (dist Vellore), Zone 07 Ambattur (dist Chennai), Zone 14 Madipakkam (dist Chennai), SCS Mill Arasoor (dist Villupuram), Pambar Dam (dist Krishnagiri), Kalasapakkam (distTiruvannamalai), Attur (dist Salem), Sirugamani KVK AWS (dist Thiruchirappalli), Mimisal (dist Pudukkottai), Chengam (dist Tiruvannamalai), Zone 15 Sholinganallur (dist Chennai), YMCA Nandnam ARG (dist Chennai), Ramanathapuram (dist Ramanathapuram), Nagudi (dist Pudukkottai), SCS Mill Thiruvannal (dist Villupuram), Echanviduthi (dist Thanjavur), Manapparai (dist Thiruchirappalli), Zone 13 Adyar (dist Chennai), Tiruchirappalli Junction (dist Thiruchirappalli), Annamalai Nagar (dist Cuddalore), Marakkanam (dist Villupuram), Rajapalayam (dist Virudhunagar), Patthukannu (dist Puducherry), Satankulam (distThoothukudi) 7 each;

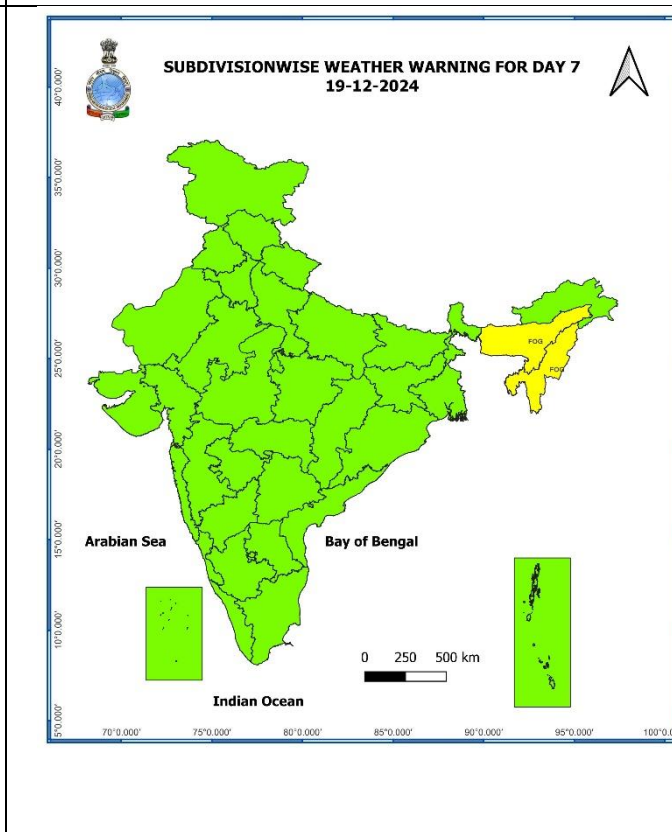
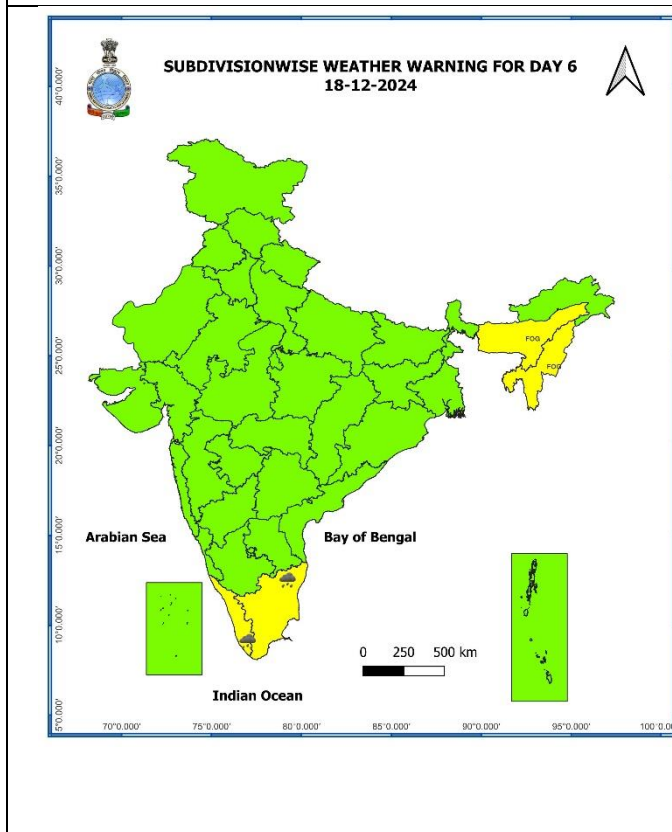
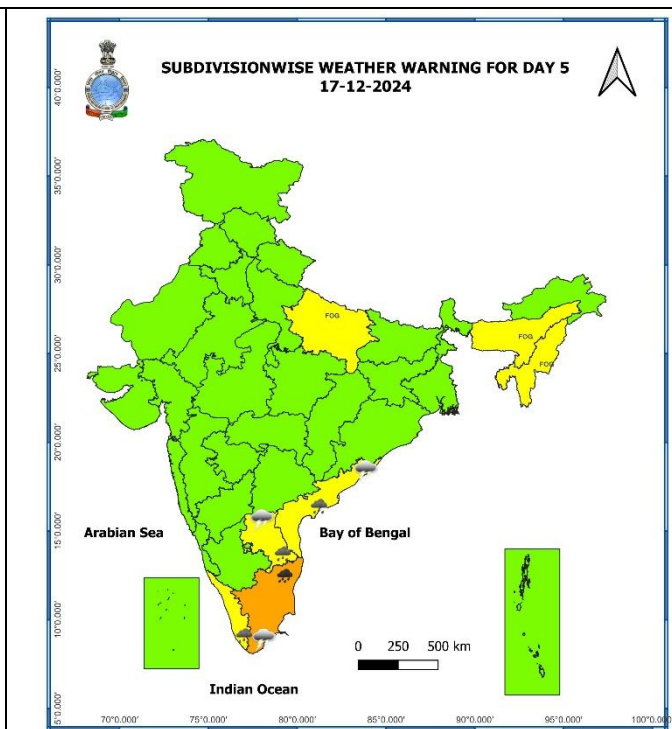
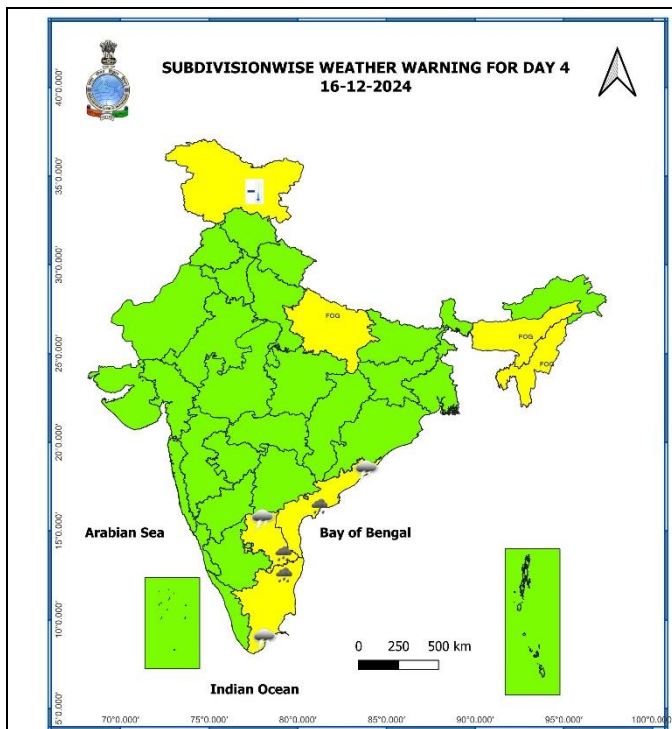
- ❖ **Kerala & Mahe:** Aryankavu (dist Kollam) 15, Kovilkadav (dist Idukki) 12, Palode (dist Thiruvananthapuram) 7
- ❖ **Royalaseema:** Sullurpeta (dist Tirupati) 14, Tada (dist Tirupati) 12, Thottambedu (dist Tirupati) 11, Srikalahasti (dist Tirupati) 10, Venkatagiri (dist Tirupati) 10, Satyavedu (dist Tirupati) 10, Kodur (dist Ysr District) 9, Tirupati Aero (dist Tirupati) 8, Nagari (dist Chittoor) 7;
- ❖ **Coastal Andhra Pradesh & Yanam:** Rapur (dist Spsr Nellore) 10.

7 Days Rainfall Forecast

S. No.	Subdivision	13-Dec	14-Dec	15-Dec	16-Dec	17-Dec	18-Dec	19-Dec
		Day 1	Day 2	Day 3	Day 4	Day 5	Day 6	Day 7
1	ANDAMAN & NICOBAR ISLANDS	WS	WS	WS	FWS	FWS	SCT	SCT
2	ARUNACHAL PRADESH	ISOL	DRY	DRY	DRY	DRY	DRY	DRY
3	ASSAM & MEGHALAYA	DRY	DRY	DRY	DRY	DRY	DRY	DRY
4	NAGALAND, MANIPUR, MIZORAM & TRIPURA	DRY	DRY	DRY	DRY	DRY	DRY	DRY
5	SUB-HIMALAYAN WEST BENGAL & SIKKIM	DRY	DRY	DRY	DRY	DRY	DRY	DRY
6	GANGETIC WEST BENGAL	DRY	DRY	DRY	DRY	DRY	DRY	DRY
7	ODISHA	DRY	DRY	DRY	DRY	DRY	DRY	DRY
8	JHARKHAND	DRY	DRY	DRY	DRY	DRY	DRY	DRY
9	BIHAR	DRY	DRY	DRY	DRY	DRY	DRY	DRY
10	EAST UTTAR PRADESH	DRY	DRY	DRY	DRY	DRY	DRY	DRY
11	WEST UTTAR PRADESH	DRY	DRY	DRY	DRY	DRY	DRY	DRY
12	UTTARAKHAND	DRY	DRY	DRY	DRY	DRY	DRY	DRY
13	HARYANA CHANDIGARH & DELHI	DRY	DRY	DRY	DRY	DRY	DRY	DRY
14	PUNJAB	DRY	DRY	DRY	DRY	DRY	DRY	DRY
15	HIMACHAL PRADESH	DRY	DRY	DRY	DRY	DRY	DRY	DRY
16	JAMMU & KASHMIR AND LADAKH	DRY	DRY	DRY	DRY	DRY	DRY	DRY
17	WEST RAJASTHAN	DRY	DRY	DRY	DRY	DRY	DRY	DRY
18	EAST RAJASTHAN	DRY	DRY	DRY	DRY	DRY	DRY	DRY
19	WEST MADHYA PRADESH	DRY	DRY	DRY	DRY	DRY	DRY	DRY
20	EAST MADHYA PRADESH	DRY	DRY	DRY	DRY	DRY	DRY	DRY
21	GUJARAT REGION	DRY	DRY	DRY	DRY	DRY	DRY	DRY
22	SAURASHTRA & KUTCH	DRY	DRY	DRY	DRY	DRY	DRY	DRY
23	KONKAN & GOA	DRY	DRY	DRY	DRY	DRY	DRY	ISOL
24	MADHYA MAHARASHTRA	DRY	DRY	DRY	DRY	DRY	DRY	ISOL
25	MARATHAWADA	DRY	DRY	DRY	DRY	DRY	DRY	DRY
26	VIDARBHA	DRY	DRY	DRY	DRY	DRY	DRY	DRY
27	CHHATTISGARH	DRY	DRY	DRY	DRY	DRY	DRY	DRY
28	COASTAL ANDHRA PRADESH & YANAM	ISOL	ISOL	ISOL	SCT	FWS	FWS	FWS
29	TELANGANA	DRY	DRY	DRY	DRY	DRY	ISOL	ISOL
30	RAYALASEEMA	SCT	ISOL	ISOL	SCT	FWS	FWS	FWS
31	TAMILNADU PUDUCHERRY & KARAIKAL	FWS	ISOL	ISOL	SCT	FWS	FWS	SCT
32	COASTAL KARNATAKA	SCT	DRY	DRY	DRY	DRY	ISOL	SCT
33	NORTH INTERIOR KARNATAKA	DRY	ISOL	DRY	DRY	ISOL	ISOL	ISOL
34	SOUTH INTERIOR KARNATAKA	ISOL	DRY	DRY	DRY	SCT	SCT	SCT
35	KERALA & MAHE	FWS	SCT	ISOL	SCT	WS	SCT	FWS
36	LAKSHADWEEP	WS	FWS	SCT	SCT	SCT	FWS	FWS

- As the lead period increases forecast accuracy decreases.





- Action may be taken based on **ORANGE AND RED COLOUR** warnings.
- Vulnerable regions likely urban and hilly areas action may be initiated for heavy rainfall warning.
- As the lead period increases forecast accuracy decreases.

Weather Realised (past 24 hours) & forecast (during 13th Dec. to 16th Dec. 2024) over Delhi/NCR**Past Weather:**

There has been a rise in minimum temperature upto 05°C over Delhi/NCR during past 24hr. The Maximum and Minimum temperature over Delhi is in the range of 20 to 23°C and 06 to 09°C respectively. The minimum temperature was below normal upto 2 to 3°C and maximum temperature was near normal over most places. Mainly smog/ mist condition with predominant surface wind from northwest direction with wind speed reaching 10 to 14 kmph prevailed on 12.12.2024. Mainly clear sky condition with wind speed less than 12 kmph northwest direction prevailed over the region in the forenoon today.

Weather Forecast:

13.12.2024: Mainly clear sky. The predominant surface wind is likely to be northwest direction with wind speed less than 14 kmph till evening. It would decrease thereafter becoming less than 08 kmph from northwest direction during night. Smog/mist is likely in the evening/night.

14.12.2024: Mainly clear sky. The predominant surface wind is likely to be from northwest direction with speed less than 08 kmph during morning hours. Smog/mist is likely in the morning. The wind speed will increase thereafter becoming less than 14 kmph from northwest direction during afternoon. It will decrease thereafter becoming less than 08 kmph from northwest direction during evening and night. Smog/mist is likely in the evening/night.

15.12.2024: Mainly clear sky. The predominant surface wind is likely to be from northwest direction with speed less than 06 kmph during morning hours. Smog/mist is likely in the morning. The wind speed will gradually increase becoming 10-12 kmph from northwest direction during afternoon. It will decrease thereafter becoming less than 06 kmph from northwest direction during evening and night. Smog/mist is likely in the evening/night.

16.12.2024: Mainly clear sky. The predominant surface wind is likely to be from variable direction with wind speed less than 04 kmph during morning hours. Smog/shallow fog is likely in the morning. The wind speed will increase thereafter becoming 06-08 kmph from northwest direction during afternoon. It will gradually decrease becoming less than 04 kmph from variable direction during evening and night. Smog/mist is likely in the evening/night.

Impact & Action Suggested due to

- ❖ **Isolated extremely heavy rainfall** very likely over Tamil Nadu on 13th December.
- ❖ **Isolated heavy to very heavy rainfall** over Kerala on 13th and Tamil Nadu on 17th December.

Impact Expected

- ❖ Localized Flooding of roads, water logging in low lying areas and closure of underpasses mainly in urban areas of the above region.
- ❖ Occasional reduction in visibility due to heavy rainfall.
- ❖ Disruption of traffic in major cities due to water logging in roads leading to increased travel time.
- ❖ Minor damage to kutcha roads.
- ❖ Possibilities of damage to vulnerable structure.
- ❖ Localized Landslides/Mudslides
- ❖ Damage to horticulture and standing crops in some areas due to inundation.
- ❖ It may lead to riverine flooding in some river catchments (for riverine flooding please visit Web page of CWC).

B. Action Suggested

- ❖ Check for traffic congestion on your route before leaving for your destination.
- ❖ Follow any traffic advisories that are issued in this regard.
- ❖ Avoid going to areas that face the water logging problems often.
- ❖ Avoid staying in vulnerable structure.

Impact expected due to dense/very dense fog in the night /morning hour:

- ❖ Transport and Aviation:
 - May affect some airports, highways and railway routes in the areas of met- sub-division.
 - Difficult driving conditions with slower journey times.
 - Unless taken precautionary measures, it may lead to some road traffic collisions.
- ❖ Power Sector:
 - Chances of Tripping of Power lines in the very dense fog routes.
- ❖ Human Health:
 - Lung related health impacts: Dense fog contains particulate matter and other pollutants and in case exposed it gets lodged in the lungs, clogging them and decreasing their functional capacity which increases episodes of wheezing, coughing and shortness of breath.
 - Impact on people having asthma bronchitis: Long time exposure to dense fog may cause respiratory problem for people having asthma bronchitis and other lung related health problems.
 - Eye Irritation: Dense fog contains pollutions of various types and these Pollutants in the air if exposed may tend to irritate the membranes of the eye causing various infections leading to redness or swelling of the eye.

Action suggested:

- ❖ Transport and Aviation:
 - Be careful while driving or outing through any transport.
 - Use fog lights during driving.
 - Be in touch with airlines, railways and state transport for schedule of your journey.
- ❖ Power Sector:
 - To keep ready Maintenance Team.
 - Human Health: To avoid outing until unless emergency and to cover the face.

Impact expected due to cold wave/severe cold wave conditions over Jammu-Kashmir-Ladakh-Gilgit-Baltistan-Muzaffarabad, Punjab, Haryana, Chandigarh, Uttar Pradesh, Rajasthan, Madhya Pradesh, Chhattisgarh, Gangetic West Bengal, Bihar and Jharkhand

- An increased likelihood of various illnesses like flu, running/ stuffy nose or nosebleed, which usually set in or get aggravated due to prolonged exposure to cold.
- Do not ignore shivering. It is the first sign that the body is losing heat. Get Indoors.
- Frostbite can occur due to prolonged exposure to cold. The skin turns pale, hard and numb and eventually black blisters appear on exposed body parts such as fingers, toes, nose and or earlobes. Severe frostbite needs immediate medical attention and treatment.
- Impact on agriculture, crop, livestock, water supply, transport and power sector at some places.

Action suggested:

- Wear several layers of loose fitting, light weight; warm woolen clothing.
- Cover your head, neck, hands and toes adequately as majority of heat loss occurs through these body parts. Wear several layers of loose fitting, light weight; warm woolen clothing rather than one layer of heavy cloth.
- Eat vitamin-C rich fruits & vegetable and drink sufficient fluids preferably warm fluids to maintain adequate immunity.
- Avoid or limit outdoor activities.
- Keep dry, if wet, change cloths immediately to prevent loss of body heat. Wear insulated/waterproof shoes.
- Warm the affected area of the body slowly with lukewarm water; do not rub the skin vigorously.
- If the affected skin area turns black, immediately consult a doctor.
- Maintain ventilation while using Heaters to avoid inhaling toxic fumes.

- Take safety measures while using electrical and gas heating devices.
- Extreme care needed for vulnerable people.
- Seek medical attention as soon as possible for someone suffering from frostbite/ Hypothermia.
- Protect livestock from cold weather.

Agromet advisories for Heavy Rainfall / Cold Wave likely over various parts of the country

- Drain out excess water from rice, sugarcane, cotton, turmeric, vegetables, and other standing crop fields, as well as coconut and banana orchards in **Tamil Nadu**; from rice, coffee, banana, coconut, arecanut, ginger, pepper, cardamom and other standing crops in **Kerala** and from rice nurseries, pigeon pea, green gram, black gram, sesame and other standing crop fields and vegetables in **South Coastal Andhra Pradesh** and **Royalaseema**.
- Provide adequate drainage facilities for removal of excess water from standing crop fields and fruit orchards in **Andaman & Nicobar Islands**.
- Keep the harvested produce in safer places or cover the produce with tarpaulin sheets in the fields.
- Provide mechanical support to horticultural crops and staking to vegetables.
- In **Jammu & Kashmir, Punjab, Haryana, Uttar Pradesh, Rajasthan, Madhya Pradesh, Chhattisgarh, Gangetic West Bengal, Bihar** and **Jharkhand**, apply light and frequent irrigation to the standing crops in the evening to protect the crops from low temperature stress or cold injuries. Use mulching and cover vegetable nurseries and young fruit plants with straw / polythene sheets to maintain optimum soil temperature.

Livestock and Fishery

- Keep the animals inside the shed during heavy rainfall and provide balanced feed.
- Store the feed and fodder at safer place to avoid spoilage from rainfall.
- Check and disinfect poultry houses to prevent disease outbreaks due to dampness.
- Check the huts and other weaker structures before relocation of the animals.
- Remove excess water from fish ponds to avoid losses of fish (if feasible).
- To protect from cold, keep cattle inside the sheds during night and provide dry bedding. Also keep the chicks warm by providing artificial light in the poultry sheds.

FLASH FLOOD GUIDANCE:

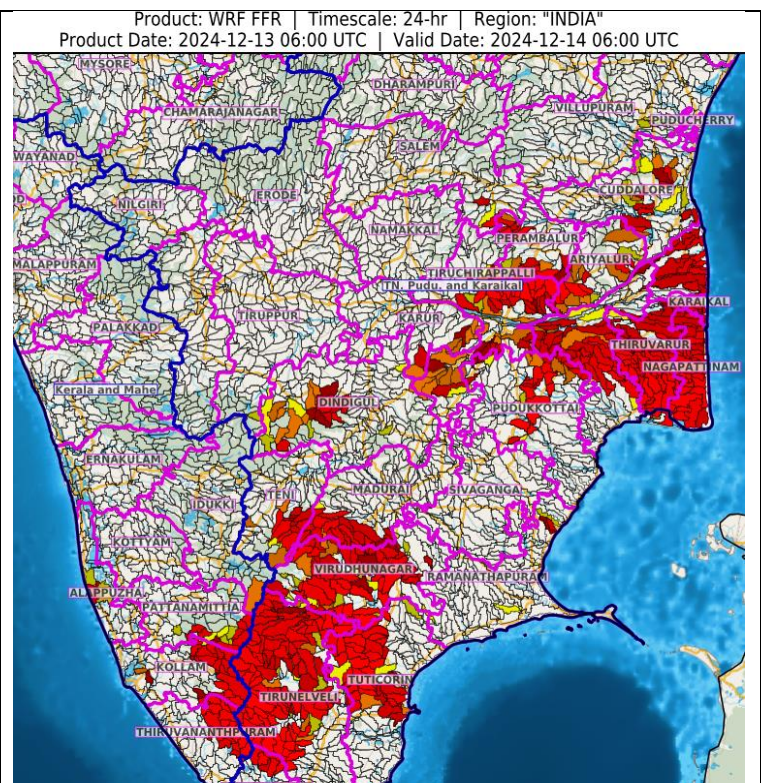
24 hours Outlook for the Flash Flood Risk (FFR) till 1130 IST of 14-12-2024:

Moderate flash flood risk likely over few watersheds & neighbourhoods of following Met Sub-divisions during next 24 hours.

Kerala & Mahe - Alappuzha, Idukki, Kollam, Pattanamittia and Thiruvananthapuram districts.

Tamil Nadu - Puducherry & Karaikal - Karaikal, Ariyalur, Cuddalore, Dindigul, Kanyakumari, Karur, Madurai, Nagapattinam, Preambular, Pudukkottai, Ramanathapuram, Salem, Teni, Thanjavur, Tiruvarur, Tiruchirappalli, Tirunelveli, Tirupur, Tuticorin, Villupuram and Virudhunagar districts.

Surface runoff/ Inundation may occur at some fully saturated soils & low-lying areas over Area of Concern (AoC) as shown in map due to expected rainfall occurrence in next 24 hours.

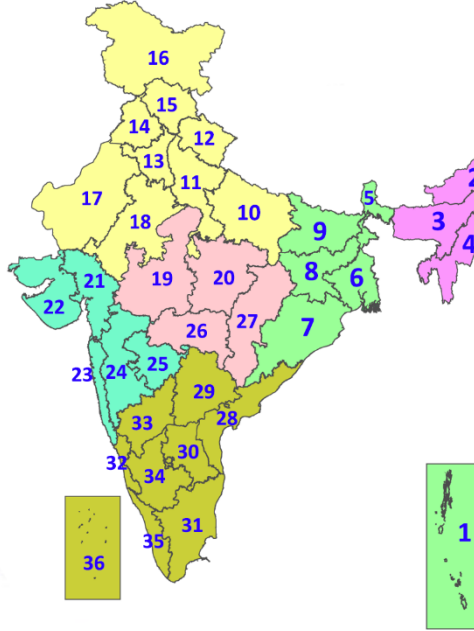


Legends & abbreviations:

- ❖ **Heavy Rain:**64.5-115.5mm; **Very Heavy Rain:**115.6-204.4mm; **Extremely Heavy Rain:** >204.4mm.
- ❖ **Obsy:** Observatory; **AWS:** Automatic Weather Station; **ARG:** Automatic Rain Gauge; **dist:** District; **NH:** National Highway; **KVK:** Krishi Vigyan Kendra; **DVC:** Damodar Valley Corporation; **PTO:** Part Time Office, **Aero:** Aerodrome, **IAF:** Indian Air Force.
- ❖ **Region wise classification of meteorological Sub-Divisions:**
 - **Northwest India:** Western Himalayan Region (Jammu-Kashmir-Ladakh-Gilgit-Baltistan-Muzaffarabad, Himachal Pradesh and Uttarakhand); Punjab, Haryana-Chandigarh-Delhi; West Uttar Pradesh, East Uttar Pradesh, West Rajasthan and East Rajasthan.
 - **Central India:** West Madhya Pradesh, East Madhya Pradesh, Vidarbha and Chhattisgarh.
 - **East India:** Bihar, Jharkhand, Sub-Himalayan West Bengal & Sikkim; Gangetic West Bengal, Odisha and Andaman & Nicobar Islands.
 - **Northeast India:** Arunachal Pradesh, Assam & Meghalaya and Nagaland, Manipur, Mizoram & Tripura.
 - **West India:** Gujarat Region, Saurashtra & Kutch, Konkan & Goa, Madhya Maharashtra and Marathawada.
 - **South India:** Coastal Andhra Pradesh & Yanam, Telangana, Rayalaseema, Coastal Karnataka, North Interior Karnataka, South Interior Karnataka, Kerala & Mahe, Tamil Nadu, Puducherry & Karaikal and Lakshadweep.

LEGENDS

1. अंडमान और निकोबार द्वीपसमूह
2. अरुणाचल प्रदेश
3. असम और मेघालय
4. नागालैंड, मणिपुर, मिजोरम और त्रिपुरा
5. उप-हिमालयी पश्चिम बंगाल और सिक्किम
6. गंगीय पश्चिम बंगाल
7. ओडिशा
8. झारखंड
9. बिहार
10. पूर्वी उत्तर प्रदेश
11. पश्चिम उत्तर प्रदेश
12. उत्तराखंड
13. हरियाणा, चंडीगढ़ और दिल्ली
14. पंजाब
15. हिमाचल प्रदेश
16. जम्मू और कश्मीर और लद्दाख
17. पश्चिम राजस्थान
18. पूर्वी राजस्थान
19. पश्चिम मध्य प्रदेश
20. पूर्वी मध्य प्रदेश
21. गुजरात
22. सौराष्ट्र
23. कोंकण और गोवा
24. मध्य महाराष्ट्र
25. मराठवाड़ा
26. विदर्भ
27. छत्तीसगढ़
28. तटीय आंध्र प्रदेश और यनम
29. तेलंगाना
30. रायलसेमा
31. तमिलनाडु, पुडुचेरी और कराईकल
32. तटीय कर्नाटक
33. आंतरिक उत्तरी कर्नाटक
34. आंतरिक दक्षिणी कर्नाटक
35. केरल और माहे
36. लक्षद्वीप



1. Andaman & Nicobar Islands
2. Arunachal Pradesh
3. Assam & Meghalaya
4. Nagaland, Manipur, Mizoram & Tripura
5. Sub-Himalayan West Bengal & Sikkim
6. Gangetic West Bengal
7. Odisha
8. Jharkhand
9. Bihar
10. East Uttar Pradesh
11. West Uttar Pradesh
12. Uttarakhand
13. Haryana, Chandigarh & Delhi
14. Punjab
15. Himachal Pradesh
16. Jammu & Kashmir and Ladakh
17. West Rajasthan
18. East Rajasthan
19. West Madhya Pradesh
20. East Madhya Pradesh
21. Gujarat
22. Saurashtra
23. Konkan & Goa
24. Madhya Maharashtra
25. Marathwada
26. Vidarbha
27. Chhattisgarh
28. Coastal Andhra Pradesh & Yanam
29. Telangana
30. Rayalaseema
31. Tamilnadu, Puducherry & Karaikal
32. Coastal Karnataka
33. North Interior Karnataka
34. South Interior Karnataka
35. Kerala & Mahe
36. Lakshadweep

SPATIAL DISTRIBUTION (% of Stations reporting)

% Stations	Category	% Stations	Category
76-100	Widespread (WS/Most Places)	26-50	Scattered (SCT/A Few Places)
51-75	Fairly Widespread (FWS/Many Places)	1-25	Isolated (ISOL)

- | | | |
|----------------------|----------------------|--------------|
| Fog | Heavy Snow | Cold Wave |
| Heavy Rain | Dust Storm | Cold Day |
| Very Heavy Rain | Heat Wave | Ground Frost |
| Extremely Heavy Rain | Warm Night | |
| Thunder & Lightning | Hot Day | |
| Hailstorm | Hot & Humid | |
| Dust Raising Winds | Strong Surface Winds | |

COLOUR CODED WARNING

- No Warning (No Action)
- Watch (Be Aware)
- Alert (Be Prepared To Take Action)
- Warning (Take Action)

Probabilistic Forecast

Terms	Probability of Occurrence (%)
Unlikely	< 25
Likely	25 - 50
Very Likely	50 - 75
Most Likely	> 75

* Red colour warning does not mean "Red Alert", Red colour warning means "Take Action".
Forecast and Warning for any day is valid from 0830 hours IST of day till 0830 hours IST of next day.
For more details, kindly visit <https://mausam.imd.gov.in> or contact: 011-2434-4599
(Service to the Nation since 1875)

DEFINITION/CRITERIA

Rain/ Snow *	<p>Heavy: 64.5 to 115.5 mm/cm *</p> <p>Very Heavy: 115.6 to 204.4 mm/cm*</p> <p>Extremely Heavy: > 204.4 mm/cm *</p>
Heat Wave	<p>When maximum temperature of a station reaches $\geq 40^\circ\text{C}$ for plains and $\geq 30^\circ\text{C}$ for hilly regions</p> <p>(a) Based on Departure from normal</p> <p>Heat Wave: Maximum Temperature Departure from normal 4.5°C to 6.4°C.</p> <p>Severe Heat Wave: Maximum Temperature Departure from normal $\geq 6.5^\circ\text{C}$</p> <p>(b). Based on Actual maximum temperature</p> <p>Heat Wave: When actual maximum temperature $\geq 45^\circ\text{C}$.</p> <p>Severe Heat Wave: When actual maximum temperature $\geq 47^\circ\text{C}$</p> <p>(c). Criteria for heat wave for coastal stations</p> <p>When maximum temperature departure is $>4.5^\circ\text{C}$ from normal. Heat Wave may be described provided maximum temperature $\geq 37^\circ\text{C}$</p>
Warm Night	<p>When maximum temperature remains 40°C</p> <p>Warm Night: When minimum temperature departure 4.5°C to 6.4°C.</p> <p>Severe Warm Night: When minimum temperature departure $>6.4^\circ\text{C}$.</p>
Cold Wave	<p>When minimum temperature of a station $\leq 10^\circ\text{C}$ for plains and $\leq 0^\circ\text{C}$ for hilly regions.</p> <p>(a). Based on departure</p> <p>Cold Wave: Minimum Temperature Departure from normal -4.5°C to -6.4°C.</p> <p>Severe Cold Wave: Minimum Temperature Departure from normal $\leq -6.5^\circ\text{C}$</p> <p>(b) Based on actual Minimum Temperature (for Plains only)</p> <p>Cold Wave : When Minimum Temperature is $\leq 4.0^\circ\text{C}$</p> <p>Severe Cold Wave: When Minimum Temperature is $\leq 2.0^\circ\text{C}$</p> <p>(c) For Coastal Stations</p> <p>When Minimum Temperature departure is $\leq -4.5^\circ\text{C}$ & actual Minimum Temperature is $\leq 15^\circ\text{C}$</p>
Cold Day	<p>When minimum temperature of a station $\leq 10^\circ\text{C}$ for plains and $\leq 0^\circ\text{C}$ for hilly regions</p> <p>Based on departure</p> <p>Cold Day: Maximum Temperature Departure from normal -4.5°C to -6.4°C.</p> <p>Severe Cold Day: Maximum Temperature Departure from normal $\leq -6.5^\circ\text{C}$</p>
Fog	<p>Phenomenon of small droplets suspended in air and the horizontal visibility $< 1\text{km}$</p> <p>Moderate Fog: When the visibility between 500-200 metres</p> <p>Dense Fog: when the visibility between 50- 200 metres</p> <p>Very Dense Fog: when the visibility < 50 metres</p>
Thunderstorm	<p>Sudden electrical discharges manifested by a flash of light (Lightning) and a sharp rumbling sound (thunder)</p>
Dust/Sand Storm	<p>An ensemble of particles of dust or sand energetically lifted to great heights by a strong and turbulent wind.</p>
Frost	<p>Ice deposits on ground</p> <p>Air temperature $\leq 4^\circ\text{C}$ (over Plains)</p>
Squall	<p>A strong wind that rises suddenly, lasts for atleast 1 minute.</p> <p>Moderate: Wind speed 52-61 kmph</p> <p>Severe: Wind speed 62-87 kmph</p> <p>Very Severe: Wind speed >87 kmph</p>
Sea State	<p>Effect of various waves in the sea over specific area</p> <p>Rough to very rough: Wind speed 41-62 kmph (22-33 knots) & Wave height 2.5-6 metre</p> <p>High to very high: Wind speed 63-117 kmph (34-63 knots) & Wave height 6-14 metre</p> <p>Phenomenal: Wind speed >117 kmph (>63 knots) & Wave height >14 metre</p>
Cyclone	<p>Cyclonic Storm: Wind speed 62-87 kmph (34-47 knots)</p> <p>Severe Cyclonic Storm: Wind speed 88-117 kmph (48-63 knots)</p> <p>Very Severe Cyclonic Storm: Wind speed 118-165 kmph (64 - 89 knots)</p> <p>Extremely Severe Cyclonic Storm: Wind speed 166-220 kmph (90 -119 knots)</p> <p>Super Cyclone Strom: Wind speed >220 kmph (>119 knots)</p>

* Red colour warning does not mean "Red Alert", Red colour warning means "Take Action".
Forecast and Warning for any day is valid from 0830 hours IST of day till 0830 hours IST of next day.
For more details, kindly visit <https://mausam.imd.gov.in> or contact: 011-2434-4599
(Service to the Nation since 1875)